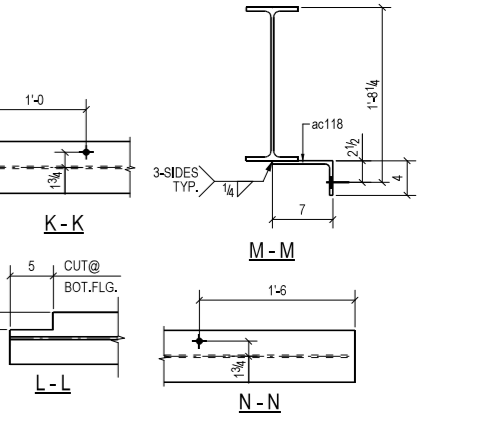


BILL OF MATERIAL

SHIP	MARK	NO.	DESCRIPTION	LENGTH	FAB.	MARK	NOTES
1	119B1	1	W12X19	14'-4 9/16"			A892 B31
		2	L4X3-1/2X5/16	0'-8 1/2"	BBA3		A36
		3	3/4"Ø A325TC	0'-2"			Workshop Bolts
		6	3/4"Ø A325TC	0'-2 1/4"			Site Bolts
		3	3/4"Ø A325TC	0'-1 3/4"			Site Bolts
1	119B2	1	W12X19	16'-1 1/4"			A892 B55
		2	L4X3-1/2X5/16	0'-8 1/2"	BBA3		A36
		1	L6X4X5/16	0'-8 1/2"	ak119		A36
		2	PL3/8"X3"	0'-8 1/2"	pc119		A572-GR.50
		3	3/4"Ø A325TC	0'-2"			Workshop Bolts
		3	3/4"Ø A325TC	0'-2 3/4"			Site Bolts
		6	3/4"Ø A325TC	0'-2 1/4"			Site Bolts
1	119B3	1	W18X35	9'-11 9/16"			A892 B59
		4	L4X3-1/2X5/16	1'-2 1/2"	BBA5		A36
		2	L7X4X3/8	0'-9"	ac118		A36
		2	L4X3-1/2X5/16	1'-5 1/2"	ag119		A36
		1	PL3/4"X14 1/4"	1'-11 1/2"	pe119		A572-GR.50
		10	3/4"Ø A325TC	0'-2 1/4"			Workshop Bolts
		4	3/4"Ø A325TC	0'-2 1/2"			Workshop Bolts
		28	3/4"Ø A325TC	0'-2"			Site Bolts
		4	1/2"Ø HLTH HCL SLEEVE ANC	0'-2 1/4"			Site Bolts
1	119B4	1	W12X19	4'-9 15/16"			A892 B718
		4	L4X3-1/2X5/16	0'-8 1/2"	BBA3		A36
		6	3/4"Ø A325TC	0'-2"			Workshop Bolts
		12	3/4"Ø A325TC	0'-2"			Site Bolts
1	119B5	1	W12X19	5'-3 3/4"			A892 B90
		2	L4X3-1/2X5/16	0'-8 1/2"	BBA3		A36
		3	3/4"Ø A325TC	0'-2"			Workshop Bolts
		6	3/4"Ø A325TC	0'-2"			Site Bolts
		3	3/4"Ø A325TC	0'-1 3/4"			Site Bolts
1	119B6	1	W12X19	4'-9 15/16"			A892 B718
		4	L4X3-1/2X5/16	0'-8 1/2"	BBA3		A36
		6	3/4"Ø A325TC	0'-2"			Workshop Bolts
		12	3/4"Ø A325TC	0'-2"			Site Bolts
1	119B7	1	W18X35	9'-11 9/16"			A892 B59
		4	L4X3-1/2X5/16	1'-2 1/2"	BBA5		A36
		2	L7X4X3/8	0'-9"	ac118		A36
		2	L4X3-1/2X5/16	1'-5 1/2"	ag119		A36
		1	PL3/4"X14 1/4"	1'-11 1/2"	pe119		A572-GR.50
		10	3/4"Ø A325TC	0'-2 1/4"			Workshop Bolts
		4	3/4"Ø A325TC	0'-2 1/2"			Workshop Bolts
		28	3/4"Ø A325TC	0'-2"			Site Bolts
		4	1/2"Ø HLTH HCL SLEEVE ANC	0'-2 1/4"			Site Bolts



REV.	DESCRIPTION	DATE	DWN	CHK
0	For Fabrication	02/08/2022	D5	D5
A	For Approval	12/07/2021	D5	D5

GENERAL NOTES

MATERIAL: A36 UNO ELECTRODES: E70XX JOB USE:

HOLES: 13/16 UNO CONNS: WELDED REF. ERECTION DWGS. SHOP

SURFACE PREP.: SSPC SP-2 APPROVAL:

AND PAINT: NO PAINT

DESCRIPTION: BEAM DETAILS

JOB:

CUSTOMER:

DRAWN BY: DATE: 11/24/2021

CHKD. BY: DATE: 12/07/2021

JOB No.: 119 0