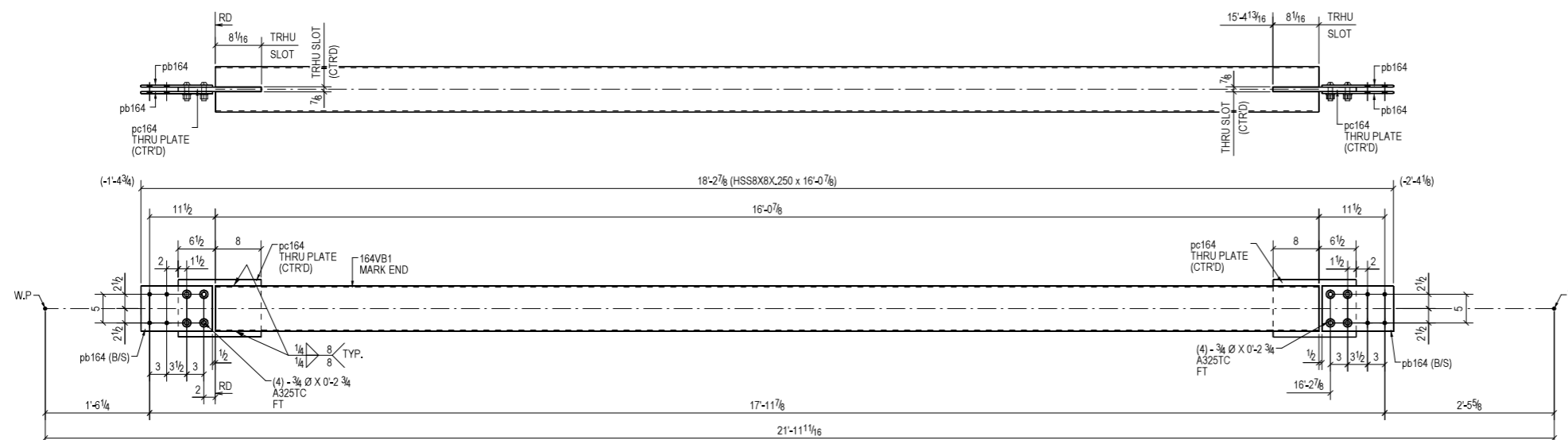
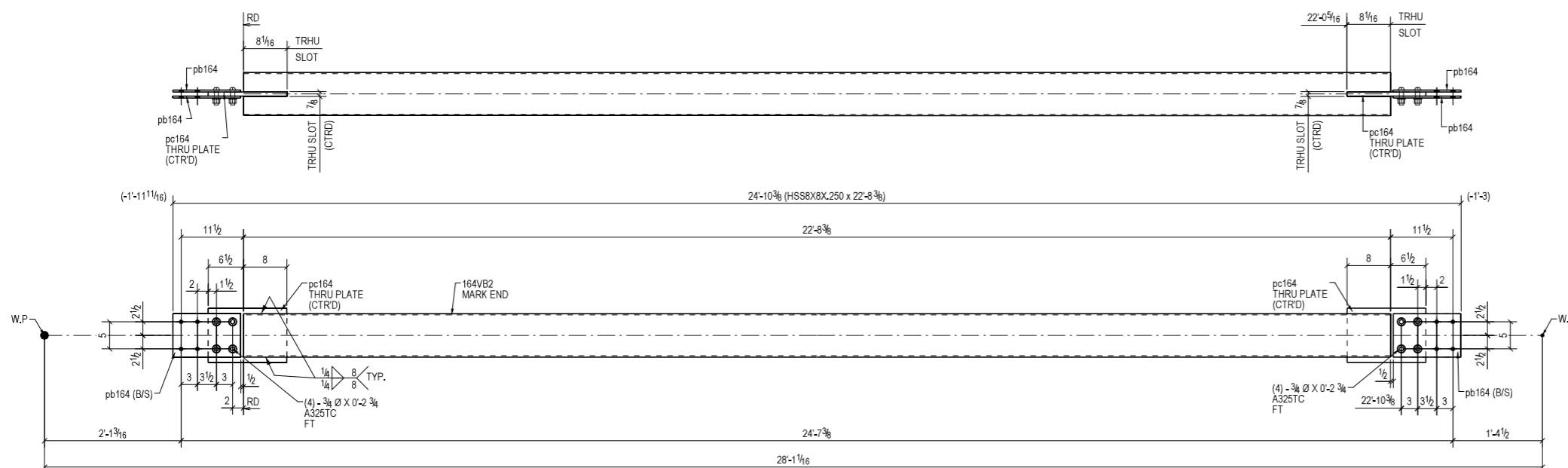


BILL OF MATERIAL

SHIP	MARK	NO. PCS.	DESCRIPTION	LENGTH	FAB. MARK	NOTES
2	164VB1	2	HSS8X8X.250	16'-0 7/8"		A500-GR.B VB2
		8	PL3/8"X8"	1'-0 1/2"	pb164	A572-GR.50
		4	PL3/4"X10"	1'-2 1/2"	pc164	A572-GR.50
		16	3/4"Ø A325TC BOLT	0'-2 3/4"		Workshop
		16	3/4"Ø A325TC BOLT	0'-2 3/4"		Site
1	164VB2	1	HSS8X8X.250	22'-8 3/8"		A500-GR.B VB4
		4	PL3/8"X8"	1'-0 1/2"	pb164	A572-GR.50
		2	PL3/4"X10"	1'-2 1/2"	pc164	A572-GR.50
		8	3/4"Ø A325TC BOLT	0'-2 3/4"		Workshop
		8	3/4"Ø A325TC BOLT	0'-2 3/4"		Site



2 - VERTICAL HSS BRACES - 164VB1



ONE - VERTICAL HSS BRACE - 164VB2

REV.	DESCRIPTION	DATE	DWN	CHK
0	For Fabrication	02/08/2022	D5	D5
A	For Approval	12/07/2021	D5	D5

GENERAL NOTES				JOB USE	
MATERIAL: A36 UNO	ELECTRODES: E70XX	REF. ERECTION DWGS.			
HOLES: 13/16 UNO	CONNS: WELDED	SE2		SHOP	
SURFACE PREP.: SSPC SP-2				APPROVAL	
AND PAINT: NO PAINT					
DESCRIPTION: VERTICAL BRACE DETAILS					
JOB:					
CUSTOMER:					
DRAWN BY:		DATE:			
CHKD. BY:		DATE:			
JOB NO.:		REV. NO.:			
		164		0	